

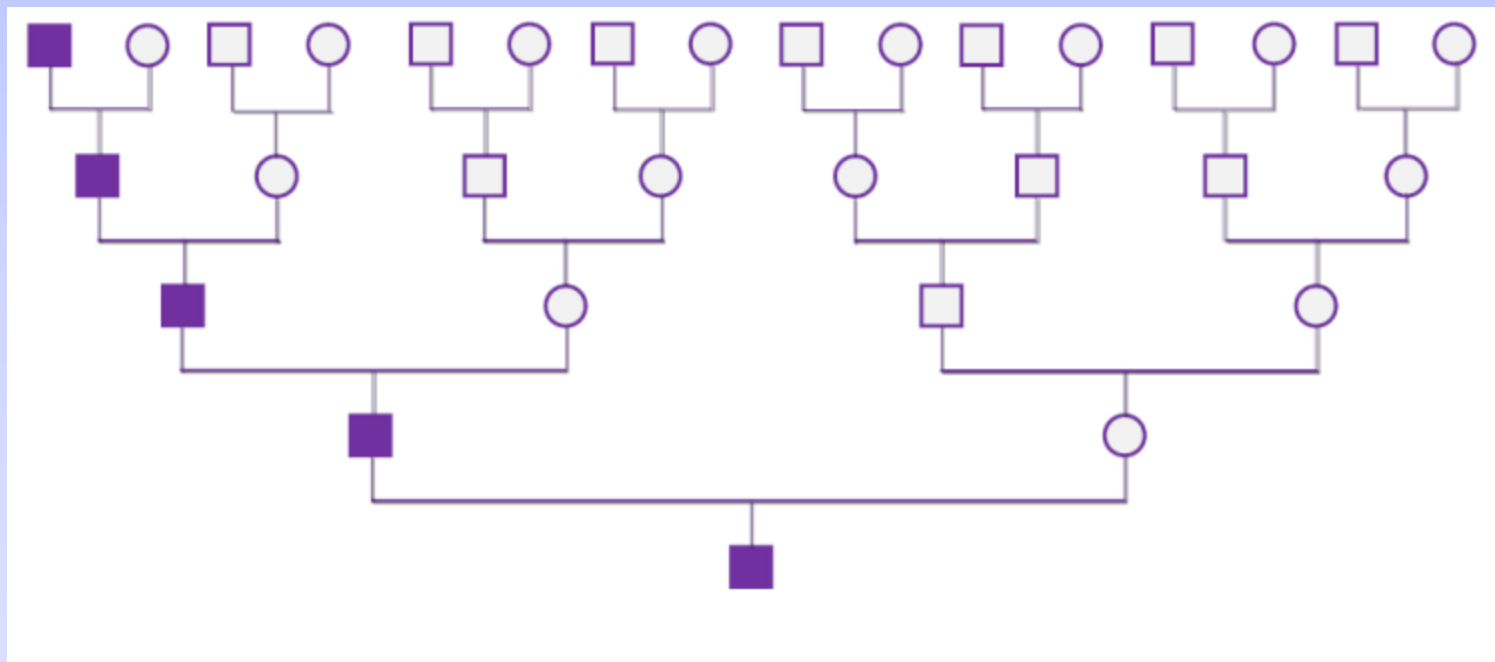


## Y-DNA Genetic Testing



## Y-DNA Genetic Testing

- Y-DNA flows from fathers to sons intact
- SNPs define Y-DNA haplogroups
- Haplogroups (clans) migrated together
- Timeframe between mutations is 2,000 to 10,000 years
- SNPs not very useful for genealogical research



**Path of Y-chromosome DNA**



## Y-DNA Differences From mtDNA Tests

- Surnames track with Y-DNA inheritance
- Y-DNA has another mutation pattern (STRs)
- Short Tandem Repeats (STRs) are more recent events
- Timeframe between mutations average 175 years
- STRs can be very useful for genealogical research



## Short Tandem Repeats (STRs)





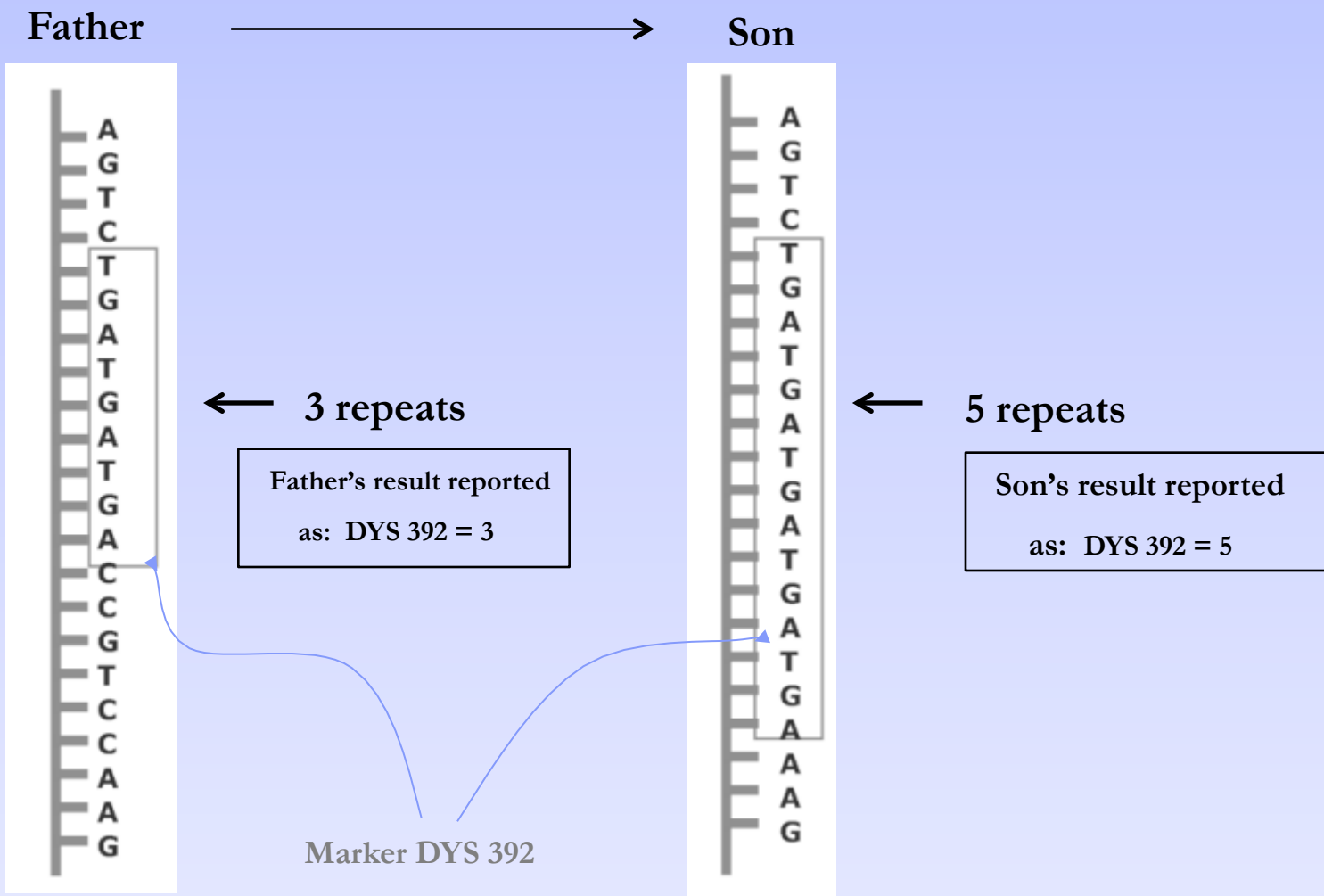
## Short Tandem Repeats (STRs)

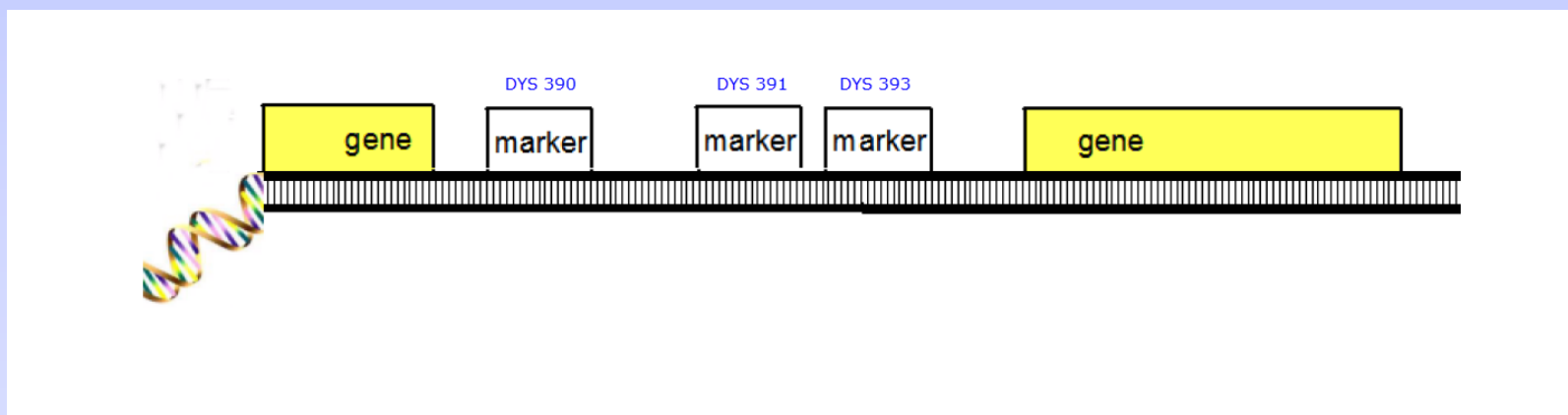


**GCC – GCC - GCC**



# STR Mutations





Source: *National Genealogical Society: Genetic Genealogy The Basics*





## Standard Y-DNA Testing

Initial Y-DNA tests used 12 STR markers

STR pattern is an individual's 'haplotype'

12	8	9	10	7	13	4	8	17	9	19	12	11
----	---	---	----	---	----	---	---	----	---	----	----	----

Standard tests today use 33 or 37 markers

Specific haplotypes are associated with SNP haplogroups

Normally haplotypes can predict haplogroups w/o SNP testing



## Standard Y-DNA Testing

I-M223  
Y-DNA Haplogroup

Y-DNA <sup>2</sup> Results Completed: 5/14/2013 Last Matched: 9/20/2013

Matches Ancestral Origins Haplotype & SNPs Matches Maps Migration Maps


SNP Map Haplogroup Origins Y-STR Results Print Certificates

Advanced Matches

Source: *FamilyTreeDNA Y-DNA Results*



## Y-DNA STR Test Results

 Y-DNA - Standard Y-STR Values

PANEL 1 (1-12)				
Marker	DYS393	DYS390	DYS19**	DYS391
Value	15	23	15	11

PANEL 2 (13-25)			
Marker	DYS458	DYS459	DYS455
Value	16	8-9	11

PANEL 3 (26-37)			
Marker	DYS460	Y-GATA-H4	YCAII
Value	11	9	19-21

Source: *FamilyTreeDNA Y-DNA Results*



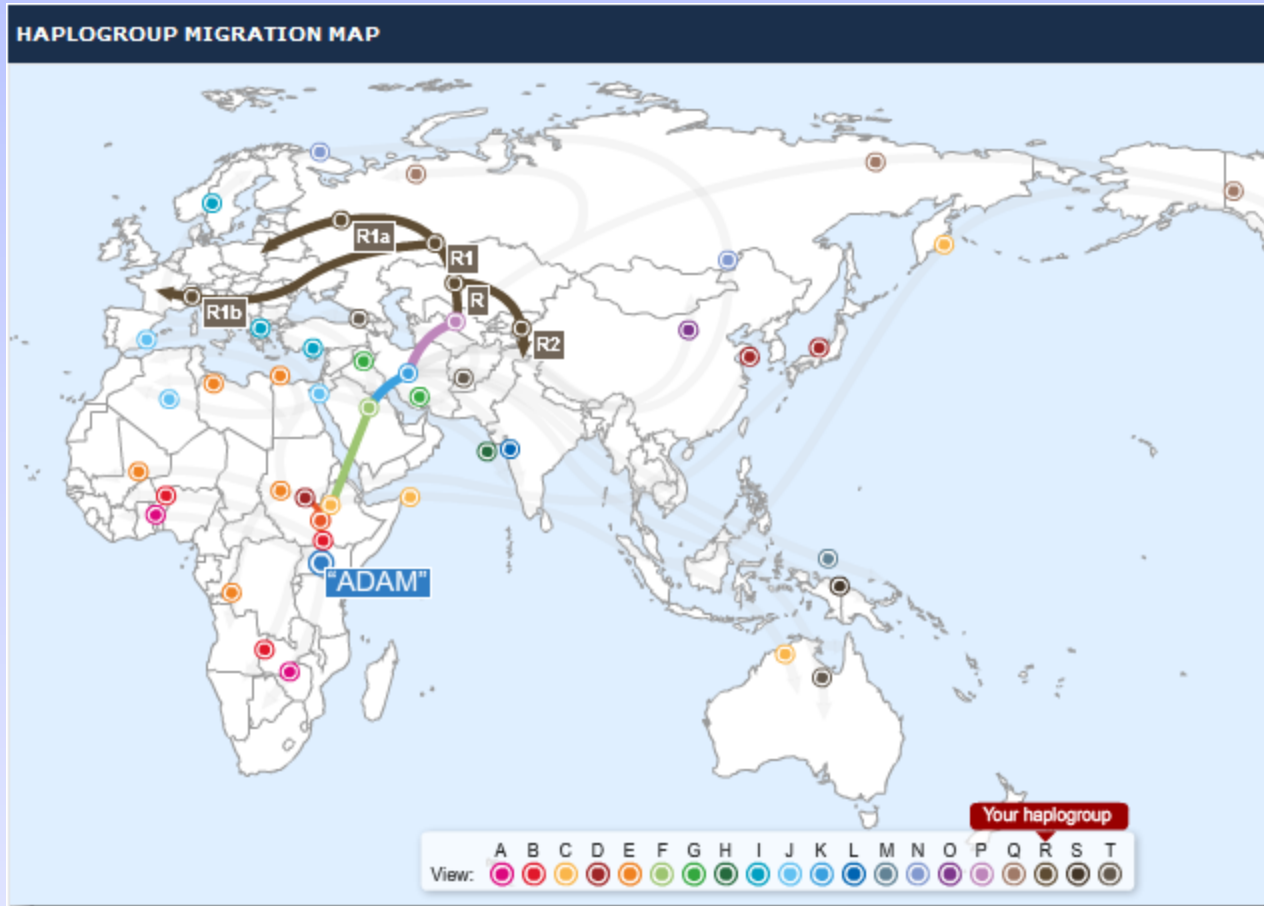
## Using STR Marker Data

1. Download your data
2. Understand the results
3. Consider joining a DNA Project
  - Surname Project
  - Haplogroup/Haplotype Project
  - Location / Clan Project



## The Smith Surname Group

	# Markers	1	2	3	4	5	6	7	8	9	10	11	12
	<b>DYS</b>	<b>393</b>	<b>390</b>	<b>19</b>	<b>391</b>	<b>385a</b>	<b>385b</b>	<b>426</b>	<b>388</b>	<b>439</b>	<b>389i</b>	<b>392</b>	<b>389ii</b>
<b>Test</b>	<b>Haplogroup</b>												
A	R1b1	13	23	14	11	11	14	12	12	12	13	13	29
B	R1b1	13	23	14	11	11	14	12	12	12	13	13	29
C	R1b1	13	24	14	11	11	14	12	12	12	13	13	29
D	R1b1	13	23	14	11	11	14	12	12	12	13	13	29
E	R1b1	13	23	14	11	11	14	12	12	12	13	13	29
F	R1b1	13	23	14	11	12	14	12	12	12	12	13	28
G	R1b1	13	23	14	11	11	14	12	12	12	13	13	29
H	R1a1	13	25	16	11	11	14	12	12	10	13	11	30
I	R1b1	13	23	14	11	11	14	12	12	12	13	13	29
J	R1b1	13	23	14	11	11	14	12	12	12	13	13	29



Source: [FamilyTreeDNA.com](http://FamilyTreeDNA.com)



## The Smith Surname Group

	# Markers	1	2	3	4	5	6	7	8	9	10	11	12
	<b>DYS</b>	<b>393</b>	<b>390</b>	<b>19</b>	<b>391</b>	<b>385a</b>	<b>385b</b>	<b>426</b>	<b>388</b>	<b>439</b>	<b>389i</b>	<b>392</b>	<b>389ii</b>
<b>Test</b>	<b>Haplogroup</b>												
A	R1b1	13	23	14	11	11	14	12	12	12	13	13	29
B	R1b1	13	23	14	11	11	14	12	12	12	13	13	29
C	R1b1	13	24	14	11	11	14	12	12	12	13	13	29
D	R1b1	13	23	14	11	11	14	12	12	12	13	13	29
E	R1b1	13	23	14	11	11	14	12	12	12	13	13	29
F	R1b1	13	23	14	11	12	14	12	12	12	12	13	28
G	R1b1	13	23	14	11	11	14	12	12	12	13	13	29
H	R1a1	13	25	16	11	11	14	12	12	10	13	11	30
I	R1b1	13	23	14	11	11	14	12	12	12	13	13	29
J	R1b1	13	23	14	11	11	14	12	12	12	13	13	29



## Analysis of Smith Surname STR Data

	# Markers	1	2	3	4	5	6	7	8	9	10	11	12
	<b>DYS</b>	<b>393</b>	<b>390</b>	<b>19</b>	<b>391</b>	<b>385a</b>	<b>385b</b>	<b>426</b>	<b>388</b>	<b>439</b>	<b>389i</b>	<b>392</b>	<b>389ii</b>
<b>Test</b>	<b>Haplogroup</b>												
A	R1b1	13	23	14	11	11	14	12	12	12	13	13	29
B	R1b1	13	23	14	11	11	14	12	12	12	13	13	29
D	R1b1	13	23	14	11	11	14	12	12	12	13	13	29
E	R1b1	13	23	14	11	11	14	12	12	12	13	13	29
G	R1b1	13	23	14	11	11	14	12	12	12	13	13	29
I	R1b1	13	23	14	11	11	14	12	12	12	13	13	29
J	R1b1	13	23	14	11	11	14	12	12	12	13	13	29

These 7 men have the same haplotype and likely share a recent common ancestor

	# Markers	1	2	3	4	5	6	7	8	9	10	11	12
	<b>DYS</b>	<b>393</b>	<b>390</b>	<b>19</b>	<b>391</b>	<b>385a</b>	<b>385b</b>	<b>426</b>	<b>388</b>	<b>439</b>	<b>389i</b>	<b>392</b>	<b>389ii</b>
<b>Test</b>	<b>Haplogroup</b>												
A	R1b1	13	23	14	11	11	14	12	12	12	13	13	29
C	R1b1	13	24	14	11	11	14	12	12	12	13	13	29

DYS 390 ranges from 18 – 27 repeats.  
C has one more than A & may not share a recent common ancestors

	# Markers	1	2	3	4	5	6	7	8	9	10	11	12
	<b>DYS</b>	<b>393</b>	<b>390</b>	<b>19</b>	<b>391</b>	<b>385a</b>	<b>385b</b>	<b>426</b>	<b>388</b>	<b>439</b>	<b>389i</b>	<b>392</b>	<b>389ii</b>
<b>Test</b>	<b>Haplogroup</b>												
A	R1b1	13	23	14	11	11	14	12	12	12	13	13	29
F	R1b1	13	23	14	11	12	14	12	12	12	12	13	28

Individual F differs by 3 markers from the main haplotype. Likely no recent common ancestor although still haplogroup R1b1.

	# Markers	1	2	3	4	5	6	7	8	9	10	11	12
	<b>DYS</b>	<b>393</b>	<b>390</b>	<b>19</b>	<b>391</b>	<b>385a</b>	<b>385b</b>	<b>426</b>	<b>388</b>	<b>439</b>	<b>389i</b>	<b>392</b>	<b>389ii</b>
<b>Test</b>	<b>Haplogroup</b>												
A	R1b1	13	23	14	11	11	14	12	12	12	13	13	29
H	R1a1	13	25	16	11	11	14	12	12	10	13	11	30

Individual H differs by 5 markers and is a different haplogroup. Definitely no recent common ancestor with any R1b1 members.





## **Y-DNA: More markers yields better resolution**

### **Family Tree DNA Tests:**

**12 markers**

**~~25 markers~~**

**37 markers**

**67 markers**

**111 markers**

### **Ancestry DNA Tests:**

**33 markers**

**46 markers**

*Source: FamilyTreeDNA & Ancestry DNA Y-DNA test offerings*



## Y-DNA Matches – Austin Line (I2b1 / I-M223) (12 Markers)

FILTER MATCHES		
Show Matches For:	<input type="text" value="The Entire Database"/>	For: <input type="text" value="12"/> Markers
Distance:	<input type="text" value="All"/>	Matches Per Page: <input type="text" value="25"/>
Last Name Starts With:	<input type="text"/>	
12 MARKERS - 51 MATCHES		
Steps	Name	Most Distant Ancestor
0	<a href="#">Richard K. Austin</a>	
0	<a href="#">Mr. James Eugene Morrow</a>	Elijah Morrow, b. 1828 KY, d. 1880-86 IN
0	<a href="#">Richard L Austin</a>	
0	<a href="#">Mr. William Winter Austin Esq.</a>	
0	<a href="#">Robert Irving Austin</a>	Reuben Austin, b.c. 1814, Washington County, NY
0	<a href="#">Mr. Scott David Pauley</a>	
0	<a href="#">Richard Levi Austin</a>	
0	<a href="#">Ralph Oramel Austin</a>	
0	Bates	Private
0	Fuller	Private
0	<a href="#">Dr. Jean-Marie Charles Bardin Ph.D.</a>	

Source: *FamilyTreeDNA Y-DNA Results*



## Y-DNA Matches – Austin Line (I2b1)

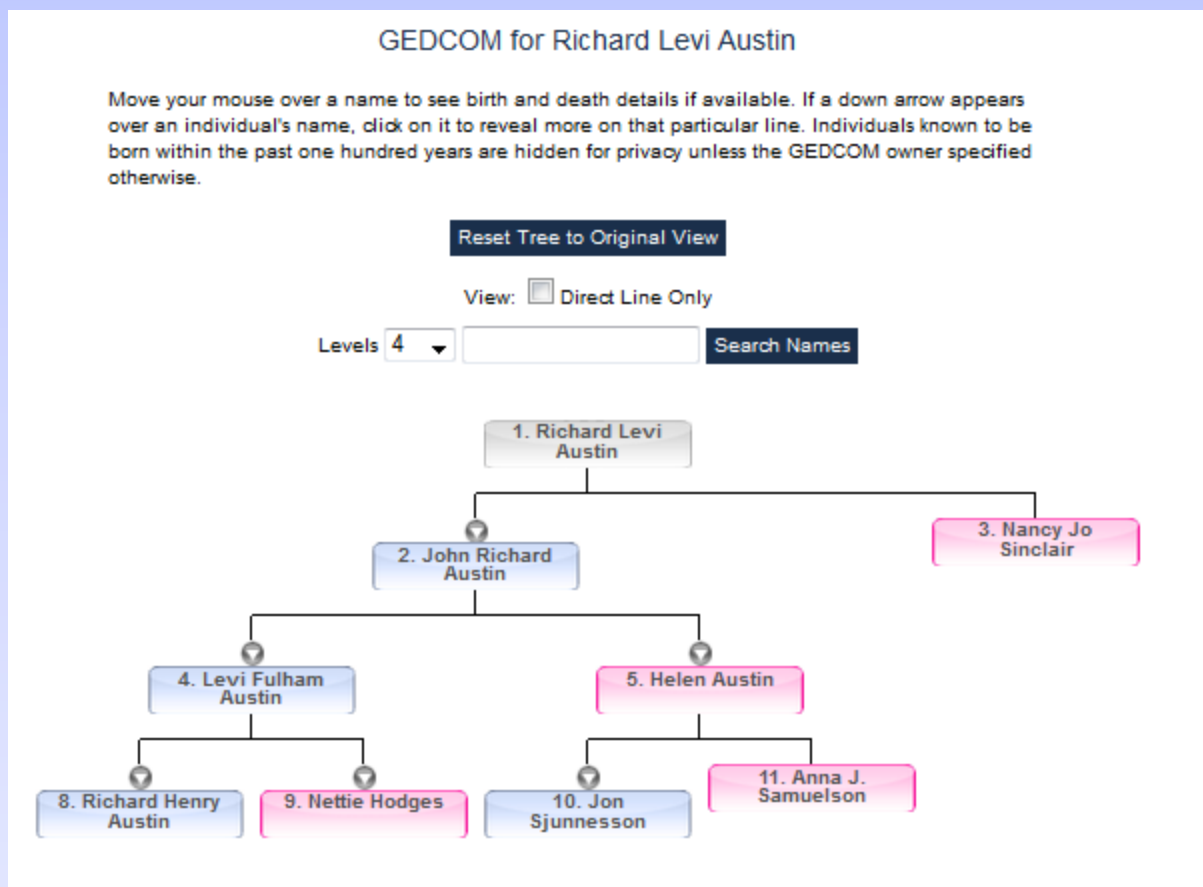
### (37 Markers)

FILTER MATCHES			
Show Matches For:	<input type="text" value="The Entire Database"/>	For: <input type="text" value="37"/>	Markers
Distance:	<input type="text" value="All"/>	Matches Per Page:	<input type="text" value="25"/>
Last Name Starts With:	<input type="text"/>		
37 MARKERS - 10 MATCHES			
Steps	Name		Most Distant Ancestor
2	<a href="#">Robert Irving Austin</a>	Y-DNA37	Reuben Austin, b.c. 1814, Washington County, NY
2	<a href="#">Richard Levi Austin</a>	Y-DNA37	
3	<a href="#">Mr. Stephen Hughes Bostwick</a>	Y-DNA37	
3	<a href="#">Mr. Richard Royal Nelson</a>	Y-DNA111	Nels Nelson (Nillssn), 1869 - 1941
4	<a href="#">Mr. Bernard Charles Norton</a>	Y-DNA37	Samuel Stiles, B. 1814, D. 1871
4	Mr. March		Private
4	<a href="#">Mr. Michael Wayne Langley</a>	Y-DNA37	Lewis Benjamin Franklin Langley b. 1884
4	<a href="#">Mr. Paul Michael Spearin</a>	Y-DNA37	John Spearin, 1789-?, Limerick (CAN8,ON3)
4	<a href="#">Mr. D H POLLOCK</a>	Y-DNA37	
4	<a href="#">Mr. Carl Edward Lettman Jr.</a>	Y-DNA37	Sidney Lettman

Source: *FamilyTreeDNA Y-DNA Results*



## Y-DNA Matches – Austin Line (I2b1) (37 Markers)



Source: *FamilyTreeDNA Y-DNA Results*



## Y-DNA Matches – McGuire Line (R1b1) (12 Markers)

FILTER MATCHES

Show Matches For: The Entire Database For: 12 Markers Distance: All Matches Per Page: 25 Last Name Starts With:

*We recommend ordering the [Y-Refine37to67](#) to narrow down your matches*

12 MARKERS - 6743 MATCHES

Steps	Name		Most Distant Ancestor
0	<a href="#">Mr. Clellen William Cullen Bryant</a>	Y-DNA12	Thomas Bryant b. 1736 and d. 1785
0	<a href="#">Mr. Corey Joseph Smith</a>	Y-DNA37	Andrew Smith, b. 1754 and d. 1784
0	<a href="#">Eugene C Smith</a>	Y-DNA12	
0	<a href="#">James Preston Hay</a>	Y-DNA37	
0	<a href="#">Dr. Robert Bruce Henry</a>	Y-DNA37	
0	<a href="#">John Ervin</a>	Y-DNA37	

Source: *FamilyTreeDNA Y-DNA Results*




## Y-DNA Matches – McGuire Line (R1b1)

### (37 Markers)

**FILTER MATCHES**

Show Matches For:  For:  Markers Distance:  Matches Per Page:  Last Name Starts With:

 We recommend ordering the [Y-Refine37to67](#) to narrow down your matches with m

**37 MARKERS - 23 MATCHES**

Steps	Name		Most Distant Ancestor
3	<a href="#">Kenneth Charles Ward</a>	Y-DNA67	Thomas Ward bef. 1761-Jul. 1831, Bradden, England
3	<a href="#">Mr. Charles Henderson Cone</a>	Y-DNA37	Daniel Cone 1626-1691
4	<a href="#">Virgil Lee Wilson Jr.</a>	Y-DNA37	
4	Crowell		Private
4	<a href="#">Dr. Stephen Coull Gammie</a>	Y-DNA111	James Alexander Gammie b. 1858 Aberdeen, Scotland
4	<a href="#">Joshua Andrew White</a>	Y-DNA37	John White, b. 1843 and d. 1863
4	<a href="#">Mr. Howard Lee Peake Jr.</a>	Y-DNA67	Samuel Peak/Peek, b 1787 VA and d. 1861 IA
4	Bowers		Private

Source: *FamilyTreeDNA Y-DNA Results*



## Y-DNA Matches – Giroux Line (R1b1)

### (12 Markers)

FILTER MATCHES			
Show Matches For:	<input type="text" value="The Entire Database"/>	For: <input type="text" value="12"/>	Markers
Distance:	<input type="text" value="All"/>	Matches Per Page:	<input type="text" value="25"/>
Last Name Starts With:	<input type="text"/>		
12 MARKERS - 66 MATCHES			
Steps	Name		Most Distant Ancestor
0	<a href="#">Mr. Rodney O'Dell</a>	Y-DNA37	WILLIAM ODELL
0	<a href="#">Dr. MOHAMMED .A. ALANAZY Ph.D.</a>	Y-DNA12	Al Joof
0	<a href="#">Mr. Philip W. O'Dell</a>	Y-DNA37	
0	<a href="#">Mr. Charles Fay Arnold</a>	Y-DNA12	Francis Arnold 1670
0	<a href="#">Mrs. Karen Clark Luhrs</a>	Y-DNA67	Veachel Clark
0	Vincolo		Private
0	<a href="#">Mr. Joseph Theodore Morley</a>	Y-DNA37	Joseph Theodore Morley, b. 1848 and d. 1922
0	<a href="#">Ms. Lillian Levy</a>	Y-DNA12	

Source: *FamilyTreeDNA Y-DNA Results*



## Y-DNA Matches – Giroux Line (R1b1) (37 Markers)

**FILTER MATCHES**

Show Matches For: The Entire Database For: 37 Markers Distance: All Matches Per Page: 25 Last Name Starts With:

---

**37 MARKERS - 2 MATCHES**

Steps	Name	Most Distant Ancestor
2	<a href="#">Joseph Anthony Moreau</a>	Y-DNA67
4	Roper	Private

Source: *FamilyTreeDNA Y-DNA Results*





## **Y-DNA Matches**

**What do you do when you don't have a Haplogroup?**

**The strange case of one VT-FCGS Member...**



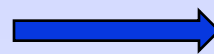
## Y-DNA STR Test Results

Each testing company has it's own database of customer DNA results

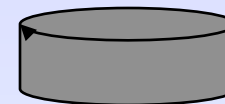
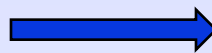
AncestryDNA customers



FamilyTreeDNA customers



Other companies



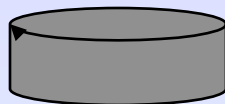


## Y-DNA STR Test Results

You can search for those common ancestors in a **bigger** pond!!



A Free Public Service from Family Tree DNA





## Typical Y-DNA Applications

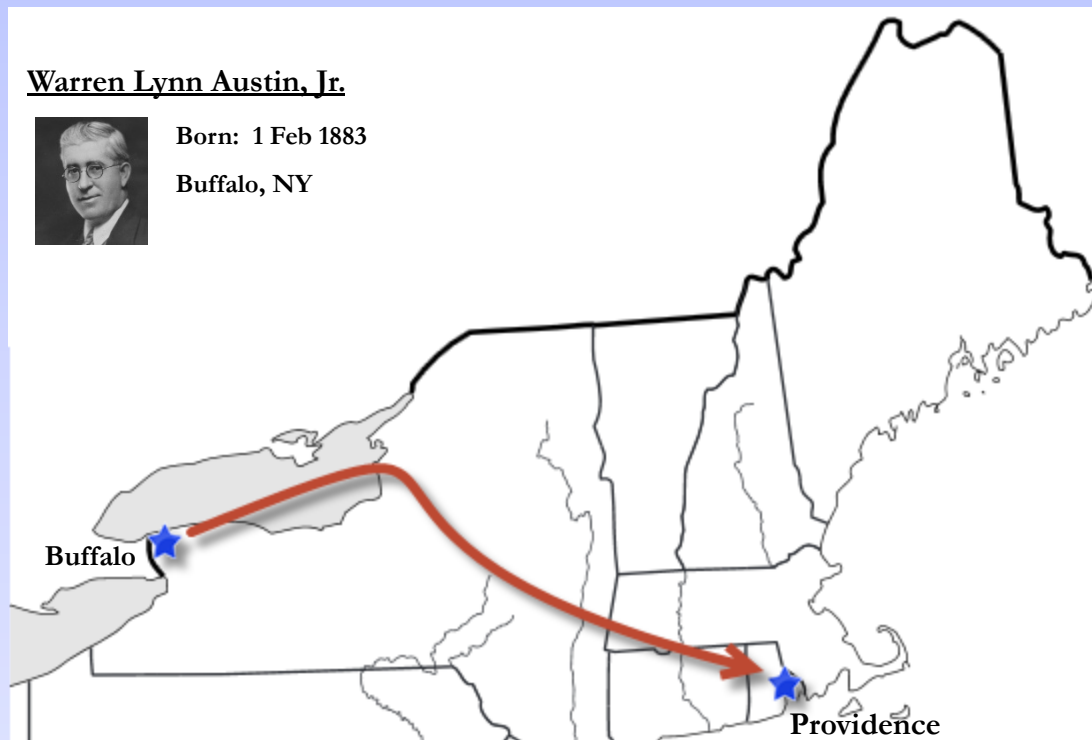
Application	Objective
Surname Research	Find connections for all people named BRADLEY
Relatedness	Are 2 men named ROY related?
Family Elimination	Narrow down which ADAMS family to investigate
Name Changes & Variations	Are men named FURST, FIRST & FOERST related?
Rare Names	Are Polish & East German KRANSICH families related?
Uncertain Paternity	Resolve adoption, illegitimacy & other questions
Verify Genealogy Research	Validate traditional written genealogy analysis
Famous Roots	Prove we're descended from Thomas CHITTENDEN
Crossing The Pond	Prove our O'REILLY family came from County Mayo



**Warren Lynn Austin, Jr.**



Born: 1 Feb 1883  
Buffalo, NY



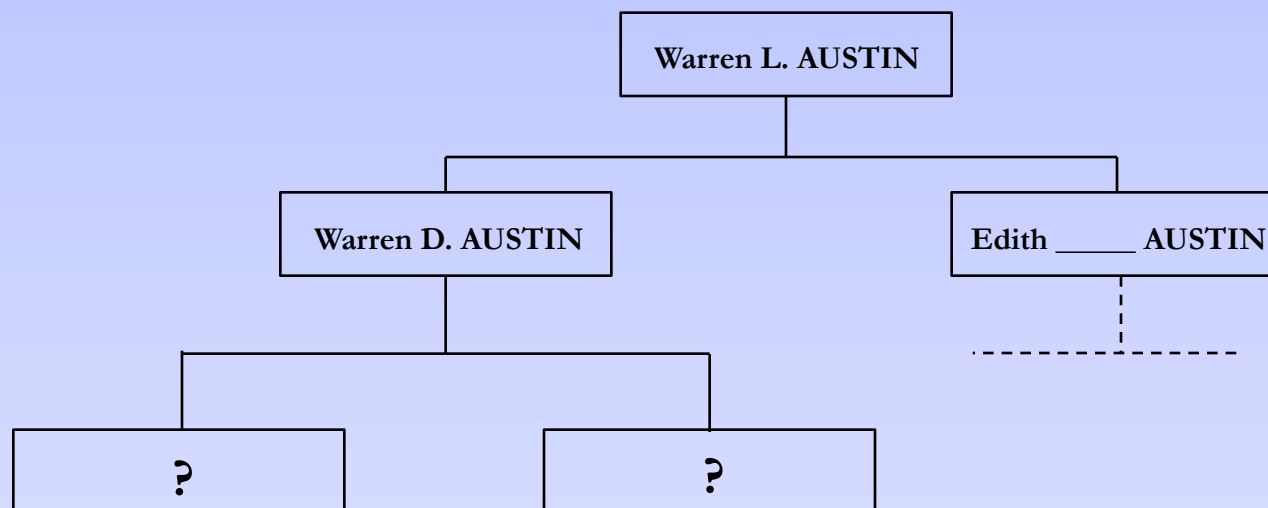


## Evidence Uncovered In Buffalo, NY

**Record 1: Baptism of Warren L. Austin, 6 Jun 1884, Riverside M. E. Church, Buffalo**

**Parents: Warren & Edith Austin**

**Birthdate: 1 Feb 1883**





## Evidence Uncovered In Buffalo, NY

**Record 1: Baptism of Warren L. Austin, 6 Jun 1884, Riverside M. E. Church, Buffalo**

**Parents: Warren & Edith Austin**

**Birthdate: 1 Feb 1883**

**Record 2: Death card for Warren D. Austin 24 Feb 1884**

*“Austin, Warren D., 24 Feb 1884*

*Age 28 years, 10 months, 8 days*

*Only son of Zina.”*





**Warren Lynn Austin, Jr.**

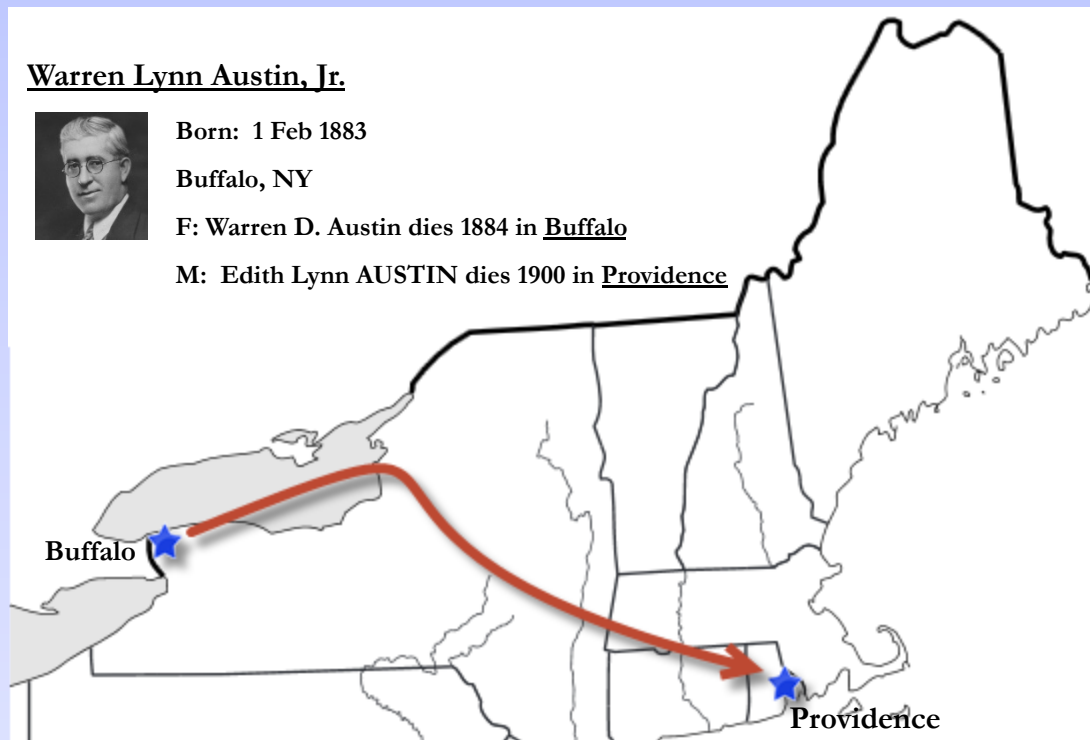


Born: 1 Feb 1883

Buffalo, NY

F: Warren D. Austin dies 1884 in Buffalo

M: Edith Lynn AUSTIN dies 1900 in Providence





## Warren's Connection to Austin Ancestry

U.S. Census: 'Zina Austin' – 2 men living in NY and both were right ages

Various facts ruled out the family of 2<sup>nd</sup> Zina Austin – leaving Zina in Saratoga County

- Zina & Martha had a son, Warren born in 1855 in Day, NY (“28 yrs, 10 mos, 8 days”)
- 1860 & 1870 Federal Censuses had Warren with Zina & Martha (Conger)
- Zina & Martha Austin living in Buffalo 1883-1884 (near Warren & Edith Austin)

Zina Austin from Day, NY, listed in *Some Descendants of Richard Austin*

- documented ancestry back to 1500's in England



## Warren's Connection to Austin Ancestry

**Concerns:** No birth certificate for Warren L. Austin

No marriage certificate for Warren D. & Edith

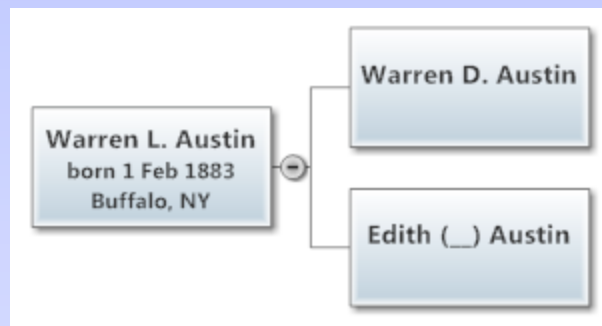
No other documentation connecting Warren D. & Zina Austin





## Y-DNA Research Validation

DNA testing: clearly define the problem you're trying to solve.



**DNA Question:** was Warren descended from Richard Austin b. 1598?

Yes?? Then I had an ancestry back to 1500's in England

No?? Back to question "who was Warren D. Austin?"



## Surname Projects Analyze Haplogroup Data for Relatedness



**Richard (1598) – MA**

**Robert (1635) – RI**

**John (1647) – CT**


**Thomas (1767) – MD**

**John (1692) – VA**

**William (1750) – NC**




# Y-DNA Surname Projects



Founded by Edith Austin Moore in 1942, the Austin Families Association endeavors to bring Austins together for a common cause.


## Austin Families Association of America



[Join us!](#)      [E-mail Us](#)

Transcriptions of the early research records of Edith Austin Moore and Janet Austin Curtis are available for Acrobat type text search.


The Dall-Tardy Letters



Now in place: A cleaner, re-formatted FGS page (guaranteed to print properly), descendant charts for each progenitor and a Master Place Index to compliment the Master Name Index! Click on "Austin Projects" to check it all out!

**Curious?**

- Origins of the name "Austin" and our Austin crest
- Learn more about Edith Austin Moore



- [Austin Projects](#)
- [AFAOA Genealogists](#)
- [Austin Queries](#)
- [Convention/Reunion](#)
- [Newsletter](#)
- [Join Us or Renew](#)
- [Contacts](#)
- [Links](#)
- [Text Document Search](#)



## Y-DNA Surname Projects

FAMILY TREE DNA HOME | PROJECT SEARCH | LOGIN



**FamilyTreeDNA**  
HISTORY UNEARTHED DAILY

About This Group ▾ | Join Request | DNA FAQ

---

### Austin-Austen Family DNA- Background

---

#### Administrators

- Carol Austin [caustin@socal.rr.com](mailto:caustin@socal.rr.com) , Group Co-Administrator

---

#### Surnames

Austen, Austin, Awsting, Ostin

---





## Austin Surname Project Tracks Over 30 American Lines

*Coordinating the collection of 37 and 67 marker Y-DNA test results for these and other Austin-Austen lines:*

**John Austin** ba.1692 of Southside Virginia

**William Austin** bc.1750 of North Carolina

**William Austin** b.1793 of Connecticut

**Thomas Austin** b.1767 of Sharpsburg, Maryland

**Thomas Austin** b.1727 of Barbados

**Samuel Austin** b. say 1640 of Boston, Massachusetts

**Richard Austin** bc.1598 of Charlestown, Mass.

**Robert Austin** b. say 1635 of Kingstown, Rhode Island

**Robert Austin** b.1794 of New Hampshire

**Edward Austin** b.1773 Rhode Island

**William Austin** bc.1813 New York

**James J. Austin** bc.1822 Cobb, Georgia

**William Austin** bc.1700 Ireland of Virginia

**John Austin** bc.1647 of New Haven CT

**John Calhoun Austin** b.1831 of Tennessee

**William Benjamin Austin** b.1827 of Arkansas

**William Austin** bc.1654 of Maryland

**John Austin** bc.1790 Virginia

**John Austin** bc.1821 Tennessee

**Jonah Austen** b. say 1598 England



## Austin Surname Project Tracks Over 30 American Lines

*Coordinating the collection of 37 and 67 marker Y-DNA test results for these and other Austin-Austen lines:*

**John Austin** ba.1692 of Southside Virginia

**William Austin** bc.1750 of North Carolina

**William Austin** b.1793 of Connecticut

**Thomas Austin** b.1767 of Sharpsburg, Maryland

**Thomas Austin** b.1727 of Barbados

**Samuel Austin** b. say 1640 of Boston, Massachusetts

**Richard Austin** bc.1598 of Charlestown, Mass.

**Robert Austin** b. say 1635 of Kingstown, Rhode Island

**Robert Austin** b.1794 of New Hampshire

**Edward Austin** b.1773 Rhode Island

**William Austin** bc.1813 New York

**James J. Austin** bc.1822 Cobb, Georgia

**William Austin** bc.1700 Ireland of Virginia

**John Austin** bc.1647 of New Haven CT

**John Calhoun Austin** b.1831 of Tennessee

**William Benjamin Austin** b.1827 of Arkansas

**William Austin** bc.1654 of Maryland

**John Austin** bc.1790 Virginia

**John Austin** bc.1821 Tennessee

**Jonah Austen** b. say 1598 England

### Possible Outcomes

1. No matches to any Austin line
2. Match to a different Austin line than Richard
3. Exact match to Richard Austin's haplotype



### Austin-Austen Family DNA Project Results - Profile Table

Last updated 6/11/2013

Austin Families Association of America (AFAOA)					M a i l e s	Haplogroup  ****	3	3	1	3	3	3	4	3	4	3	3	3
Kit	AFAOA Database and Link	1st Generation	2nd Generation	3rd Generation			9	9	9	9	8	8	2	8	3	8	9	8
80562	<a href="#">TN White Co.</a>	Nathaniel Austin	William Henry b 1805 TN	Thomas A. b 1844 TN	5	E1b1a	15	21	16	10	16	18	11	12	12	14	11	31
173715	<a href="#">TN White Co.</a>	b 1781 VA	Raleigh	Shelby b 1843 TN	3	E1b1a	15	21	16	10	16	18	11	13	12	14	11	31
67778	<a href="#">TN White Co.</a>		b. 1815 TN	John A. bc 1849 TN	5	E1b1a	15	21	16	10	16	18	11	12	12	14	11	31
80324	<a href="#">TN White Co.</a>	John Austin b 1802 TN	John Meantha b 1838 MO	Pelorus b 1863 MO	2	E1b1a	15	21	16	10	16	18	11	12	12	14	11	31
219403	<a href="#">TN White Co.</a>	John Austin b 1779 NC	John Jr. b 1818 TN	William E. b 1860 TN	2	E1b1a	15	21	16	10	16	18	11	12	12	14	11	31
32962	<a href="#">VA John southside</a>	Richard Austin bc 1790 GA	Jackson b 1831 LA	William bc 1858 LA	2	E1b1a	15	21	15	10	16	18	11	12	12	14	11	31
100758	<a href="#">VA John southside</a>	Richard Ellis Austin b 1822 KY	Freeling Baker b. 1852 K	Harvey Jackson b 1893	1	E1b1a	15	21	16	10	16	17	11	12	12	14	11	31
1812	<a href="#">VA John southside</a>	William Austin bc 1750 VA	Hezekiah b 1787 VA	Jonathan A. b 1823 TN	3	E1b1a	15	21	16	10	16	18	11	12	12	14	11	31
145277	<a href="#">VA John southside</a>	Joseph Austin res. MO	Joseph b 1820 MO	William G. b 1847 MO	2	E1b1a	15	21	16	10	16	18	11	12	12	14	11	31

Over 250 Austin men have submitted y-DNA test results.



## Austin-Austen Family DNA Project Results - Profile Table

Last updated 6/11/2013

Kit	AFAOA Database and Link	1st Generation	2nd Generation	3rd Generation	Males	Haplogroup	****											
							3	3	1	3	3	3	4	3	4	3	3	3
<b>Austin Families Association of America (AFAOA)</b>							9	9	9	9	8	8	2	8	3	8	9	8
							3	0		1	5	5	6	8	9	9	2	9
80562	<a href="#">TN White Co.</a>	Nathaniel Austin	William Henry b 1805 TN	Thomas A. b 1844 TN	5	E1b1a	15	21	16	10	16	18	11	12	12	14	11	31
173715	<a href="#">TN White Co.</a>	b 1781 VA	Raleigh	Shelby b 1843 TN	3	E1b1a	15	21	16	10	16	18	11	13	12	14	11	31
67778	<a href="#">TN White Co.</a>		b. 1815 TN	John A. bc 1849 TN	5	E1b1a	15	21	16	10	16	18	11	12	12	14	11	31
80324	<a href="#">TN White Co.</a>	John Austin b 1802 TN	John Meantha b 1838 MO	Pelorus b 1863 MO	2	E1b1a	15	21	16	10	16	18	11	12	12	14	11	31
219403	<a href="#">TN White Co.</a>	John Austin b 1779 NC	John Jr. b 1818 TN	William E. b 1860 TN	2	E1b1a	15	21	16	10	16	18	11	12	12	14	11	31
32962	<a href="#">VA John southside</a>	Richard Austin bc 1790 GA	Jackson b 1831 LA	William bc 1858 LA	2	E1b1a	15	21	15	10	16	18	11	12	12	14	11	31
100758	<a href="#">VA John southside</a>	Richard Ellis Austin b 1822 KY	Freeling Baker b. 1852 K	Harvey Jackson b 1893	1	E1b1a	15	21	16	10	16	17	11	12	12	14	11	31
13568	<a href="#">MA Samuel</a>			Thomas b 1692 MA	8	R1b1a2	13	23	14	11	11	14	12	12	12	13	13	29
19239	<a href="#">MA Samuel</a>	Samuel Austin	Thomas	Benjamin b 1694 MA	7	R1b1a2	13	23	14	11	11	14	12	12	12	13	13	29
16561	<a href="#">MA Samuel</a>	say 1640	b 1671 Boston, MA	Zebediah b 1701 MA	6	R1b1a2	13	23	14	11	11	14	12	12	12	13	13	29
25069	<a href="#">MA Samuel</a>	res. Boston, MA	r. Andover, MA		7	R1b1a2	13	23	14	11	12	14	12	12	12	13	13	29
13566	<a href="#">MA Samuel</a>				7	R1b1a2a1a1a4	13	23	14	11	11	14	12	12	12	13	13	29
N50464	<a href="#">MA Samuel</a>	Isaac Eli Austin b 1883 CA				R1b1a2	13	23	14	11	11	14	12	12	12	13	14	29
147277		Hezekiah Austin res. VT	Elvin b 1808 VT	Rodney N. b 1844 VT	3	R1b1a2	13	23	14	11	11	14	12	12	12	13	13	29
25039	<a href="#">MA Daniel</a>	Daniel Austin bc 1761 MA	Rensselaer b 1804 NY	Charles V. R. b 1826 MA	4	R1b1a2	13	23	14	11	11	14	12	12	12	13	13	29
18245	<a href="#">MD William</a>	William Austin	William	William	7	R1b1a2a1a1a4	13	23	14	11	11	14	12	12	12	13	13	29
34236	<a href="#">MD William</a>	bc 1657 of MD	bc1690 MD	bc 1710 MD	6	R1b1a2	13	23	14	11	11	14	12	12	12	13	13	29
134664	<a href="#">MD William</a>				7	R1b1a2	13	23	14	11	11	14	12	12	12	13	13	29
78795	<a href="#">MD William</a>	William Austin bc 1705 Ireland	William bc 1732 MD	William b 1754 NC	6	R1b1a2	13	23	14	11	11	14	12	12	12	13	13	29
27680	<a href="#">MD William</a>	Phillip Austin bc 1758 MD	Charles b 1786 NC	William Young b 1818 NC	4	R1b1a2	13	23	14	11	11	15	12	12	12	13	13	29
132468	<a href="#">MD William</a>	William Austin bc 1735 Ireland	Benjamin D. b 1760 NC	Elijah b 1792 NC	4	R1b1a2	13	23	14	11	11	14	12	12	12	13	13	29
124161	<a href="#">MD William</a>	Absalom Austin bc 1725 MD	Moses bc 1762 MD	Samuel F. b 1803 NC	6	R1b1a2	13	23	14	11	11	14	12	12	12	13	13	29
32203	<a href="#">IL Larkin</a>	Larkin Kelly Austin	Jasper b 1853 IL	Gregg b 1888 IL	1	R1b1	13	23	14	11	11	13	12	12	12	13	13	29
98075	<a href="#">IL Larkin</a>	b 1813	Jonathan b 1855 IL	Harvey E. 1902 IL	1	R1b1a2	13	23	14	11	11	14	12	12	12	13	13	29
170228	<a href="#">IL Larkin</a>	TN	J. Scott b 1855 IL	Rob b 1881 IL	1	R1b1a2	13	23	14	11	11	14	12	12	12	13	13	29
118609	<a href="#">IL Larkin</a>	James S. Austin b 1820 TN	Francis Marion b 1862 IL	Albert Edmond b 1905 IL	1	R1b1a2	13	23	14	11	11	14	12	12	12	13	13	29
130467	<a href="#">ME Matthew</a>	Matthew Austin bc 1620 England	Matthew bc 1658 ME	Benjamin b 1724 ME	6	R1b1a2a1a1a	13	23	14	10	11	14	12	12	12	13	13	29
109394	<a href="#">MD Solomon &amp; John</a>	Solomon Austin b 1744 MD	Philip b 1790 SC	Isaac b 1820 ON	3	R1b1a2	14	23	14	11	11	14	12	12	12	13	13	29



## Austin-Austen Family DNA Project Results - Profile Table

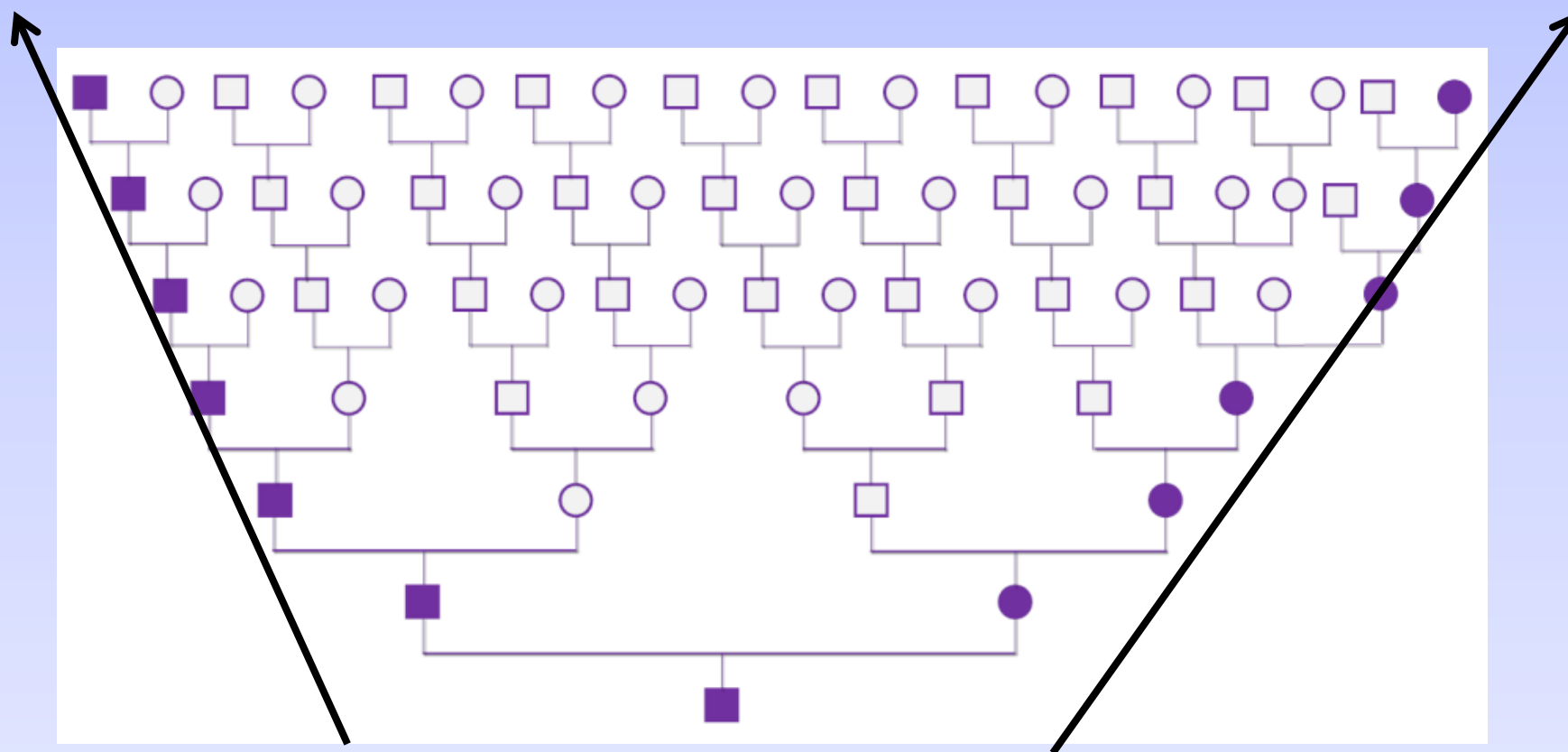
Last updated 6/11/2013

Kit	AFAOA Database and Link	1st Generation	2nd Generation	3rd Generation	Males	Haplogroup	****												
							3	3	1	3	3	3	4	3	4	3	3	3	
<b>Austin Families Association of America (AFAOA)</b>							9	9	9	9	8	8	2	8	3	8	9	8	
							3	0	1	5	5	6	8	9	9	2	9		
										a	b				—	—	2		
80562	<a href="#">TN White Co.</a>	Nathaniel Austin	William Henry b 1805 TN	Thomas A. b 1844 TN	5	E1b1a	15	21	16	10	16	18	11	12	12	14	11	31	
173715	<a href="#">TN White Co.</a>	b 1781 VA	Raleigh	Shelby b 1843 TN	3	E1b1a	15	21	16	10	16	18	11	13	12	14	11	31	
67778	<a href="#">TN White Co.</a>		b. 1815 TN	John A. bc 1849 TN	5	E1b1a	15	21	16	10	16	18	11	12	12	14	11	31	
80324	<a href="#">TN White Co.</a>	John Austin b 1802 TN	John Meantha b 1838 MO	Pelorus b 1863 MO	2	E1b1a	15	21	16	10	16	18	11	12	12	14	11	31	
219403	<a href="#">TN White Co.</a>	John Austin b 1779 NC	John Jr. b 1818 TN	William E. b 1860 TN	2	E1b1a	15	21	16	10	16	18	11	12	12	14	11	31	
32962	<a href="#">VA John southside</a>	Richard Austin bc 1790 GA	Jackson b 1831 LA	William bc 1858 LA	2	E1b1a	15	21	15	10	16	18	11	12	12	14	11	31	
100758	<a href="#">VA John southside</a>	Richard Ellis Austin b 1822 KY	Freeling Baker b. 1852 K	Harvey Jackson b 1893	1	E1b1a	15	21	16	10	16	17	11	12	12	14	11	31	
1812	<a href="#">VA John southside</a>	William Austin bc 1750 VA	Hezekiah b 1787 VA	Jonathan A. b 1823 TN	3	E1b1a	15	21	16	10	16	18	11	12	12	14	11	31	
145277	<a href="#">VA John southside</a>	Joseph Austin res. MO	Joseph b 1820 MO	William G. b 1847 MO	2	E1b1a	15	21	16	10	16	18	11	12	12	14	11	31	
14164	<a href="#">MA Richard</a>	Richard Austin bc 1598 England res. Charlestown, MA	Richard bc 1632 England	Joseph b 1677 MA	8	I2b1	15	23	15	11	15	15	11	13	11	14	12	31	
16603	<a href="#">MA Richard</a>		Richards b 1686 MA		7	I2b1	15	23	15	11	15	15	11	13	11	14	12	31	
20267	<a href="#">MA Richard</a>		Anthony bc 1636 England	Anthony		7	I2b1	15	23	15	11	15	15	11	13	11	14	12	31
188363	<a href="#">MA Richard</a>		res. Suffield, MA/CT	b 1668 MA		9	I2b1	15	23	15	11	15	15	11	13	11	14	12	31
261918	<a href="#">MA Richard</a>			John b 1672 MA			I2b1	15	23	15	11	15	15	11	13	11	14	12	31
33038	<a href="#">MA Richard</a>			Nathaniel		9	I2b1	15	23	15	11	15	15	11	13	11	14	12	31
89904	<a href="#">MA Richard</a>			b 1678 MA		9	I2b1	15	23	15	11	15	15	11	13	11	14	12	31



# Straight Maternal & Paternal Ancestry

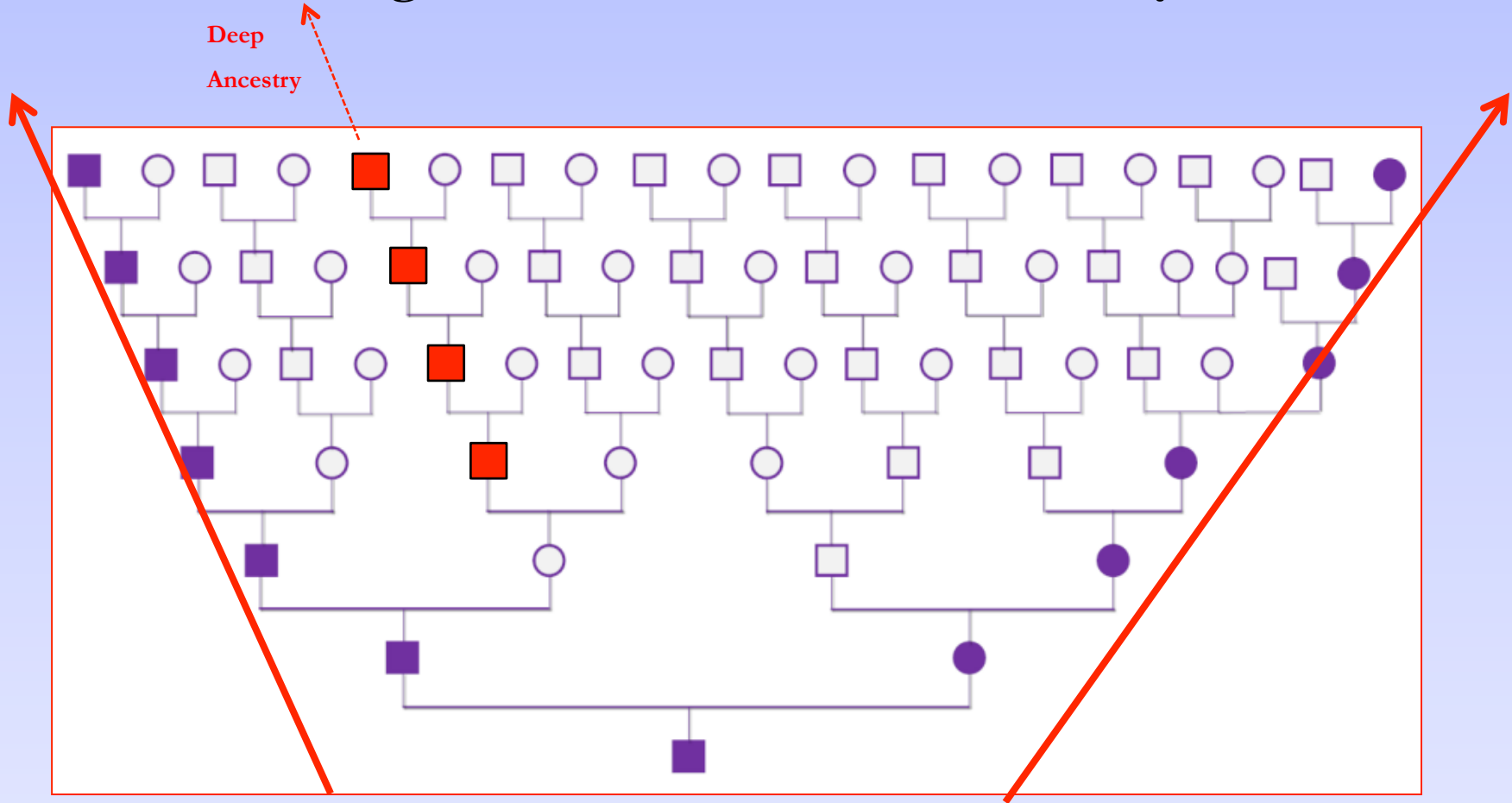
Limited to Only 2 Lines





# Straight Maternal & Paternal Ancestry

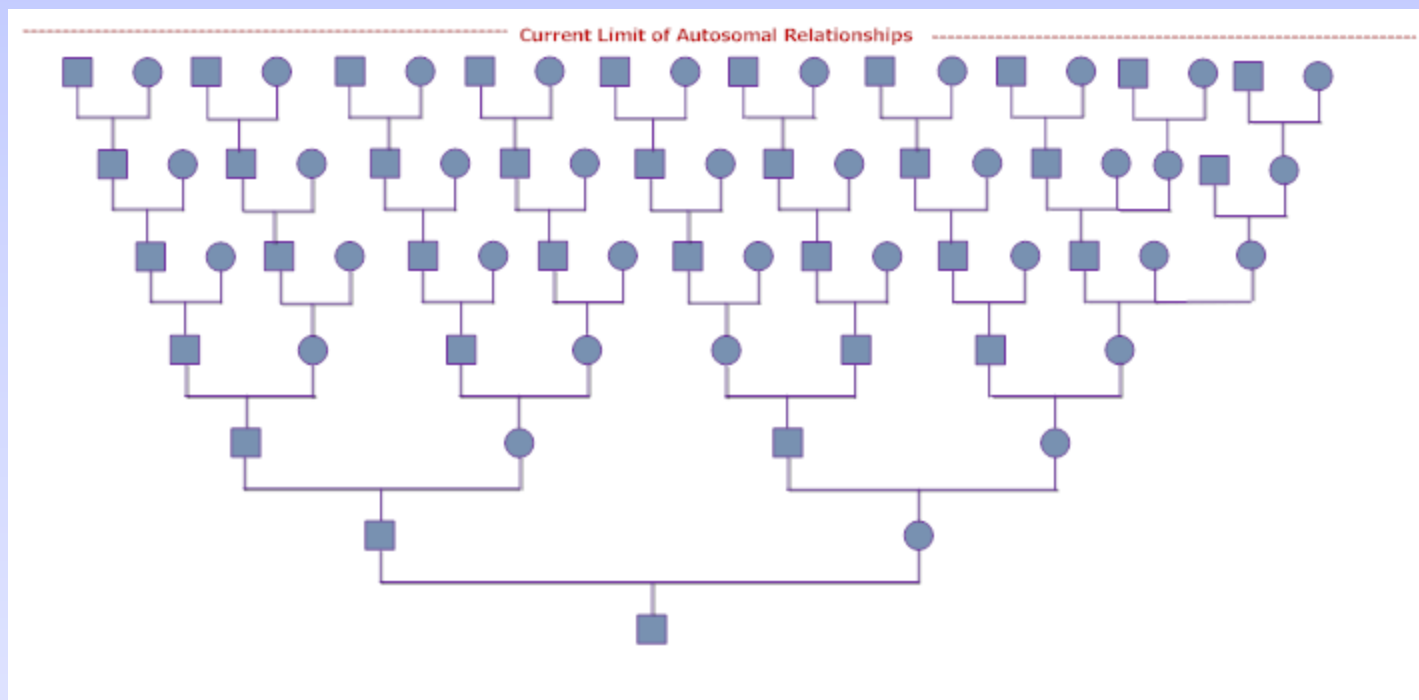
Deep  
Ancestry





# Autosomal DNA Testing Finds More Relationships

Limitation Is 4 to 6 Generations







## Which DNA Testing Company Do I Use?





## Genetic Genealogy Testing Companies

### Critical Attributes

**Expertise**

**Experience**

**Size of existing DNA databases**

**Proven track record**

**Support**

**Cost**



## Genetic Genealogy Testing Companies

### My Top Picks





## DNA Testing Companies

	Y-DNA	mt-DNA	at-DNA*	Medical
23andMe	N	Y	Y	?**
AncestryDNA	Y	Y	Y	N
FamilyTreeDNA	Y	Y	Y	N

\* All 3 companies use the Illumina chip for autosomal testing

\*\* FDA currently has hold on 23andMe medical testing



## Genetic Genealogy Testing Companies

		23andMe	AncestryDNA	FamilyTreeDNA
<b>mt-DNA</b>	HVR 1 & 2	-	\$179	\$59
	Full mt-DNA	-	-	\$199
<b>Y-DNA</b>	12 Markers	-		\$59
	33 Markers	-	\$149	
	37 Markers	-		\$169
	46 Markers	-	\$179	
	67 Markers	-		\$268
	111 Markers	-		\$359
<b>at-DNA</b>	682K SNPs		\$99	
	709K SNPs			\$99
	976K SNPs	\$99		

(Prices are from company websites as of 21 Feb 2014)



## How to Save Money on DNA Tests

- Join a Surname Project or Haplogroup / Location Project first.
- Look for promotions at conferences (like this one!!)
- Remember 'DNA Day'
- Ancestry.com gives discounts to members
- Watch company websites for random offers
- Don't over-test (eg. - 111 STR markers at the start)



## DNA Tests & Test Kits

### FamilyTreeDNA





## DNA Tests & Test Kits

### AncestryDNA & 23andMe



**Get your kit**  
with easy-to-follow instructions.



**Send in your kit**  
with a small saliva sample.





## Turn-Around Time for DNA Tests

Receiving kits		2 weeks <sup>1,2</sup>
Completion time	Y-DNA	3-4 weeks <sup>1</sup>
	mt-DNA	6-8 weeks <sup>1</sup>
	Autosomal DNA	3-4 weeks <sup>2</sup> 3-8 weeks <sup>1</sup>

<sup>1</sup> FamilyTreeDNA

<sup>2</sup> Ancestry DNA



## Advice and Warnings

- **Migration Maps & Ethnicity Percentages are speculative**
- **Some results provide too many matches (common haplotype)**
- **Some results provide too few matches (rare DNA or too few testers)**
- **Using these tools requires more work than advertised**
  - sending in the kit is the easy part
- **The key is having a good hypothesis to evaluate**
- **Be prepared for NPEs – or don't test**



## Upcoming Classes

Date	Topic	Speaker
01 Feb	Beginning Genealogy	Sheila Morris
08 Feb	New Tools at our VTGENLIB Website	Ed McGuire
15 Feb	Going Professional: Education & Preparation	Joanne Polanshek
22 Feb	Genetic Genealogy – Part 1	Ed McGuire
01 Mar	Genetic Genealogy – Part 2	Ed McGuire
08 Mar	VTs Irish in the Civil War	Bill McKone
29 Mar	Early New England Records at AmericanAncestors.org	Ed McGuire
05 Apr	Locating Irish Immigrants in Quebec & Canada	Gary Schroder
12 Apr	Acadian Research	Mike Sevigny
19 Apr	- - - EASTER HOLIDAY - - -	
26 Apr	Quebec Genealogy Records	D. Beaugrand-Champlain
03 May	Obituary Records – How to Use Them	Lynn Johnson
10 May	Finding Francis: A Search for my Scottish Ancestors	Bill Craig

12 Mar      Irish Genealogy Talk & Ancestors Roadshow      Cathi Desmarais & Ed McGuire



## Tuesday Genealogy Study Groups

(6:30 - 8:00 PM)

<b>Interest Group</b>	<b>Week of the Month</b>
English & Scottish	1 <sup>st</sup> Tuesday
New York Research	2 <sup>nd</sup> Tuesday
Irish	3 <sup>rd</sup> Tuesday
Genetic Genealogy	4 <sup>th</sup> Tuesday

- Examine resources & demo products
- Discuss what's worked for you
- Learn what tools others use & how they like them
- Go online and tackle someone's problem each week



## Goals

### Understand Y-chromosome & mitochondrial DNA tests

- The problems they can address
- Best companies
- Costs
- Interpreting the results



## Genetic Genealogy At Our Library

- 4<sup>th</sup> Tuesday is 'DNA Night'
- DNA Forums for discussions, questions and answers
- A focus on French-Canadian genetic patterns & diseases

**“We’re Here To Help”**



Thank You!

Any  
Questions??

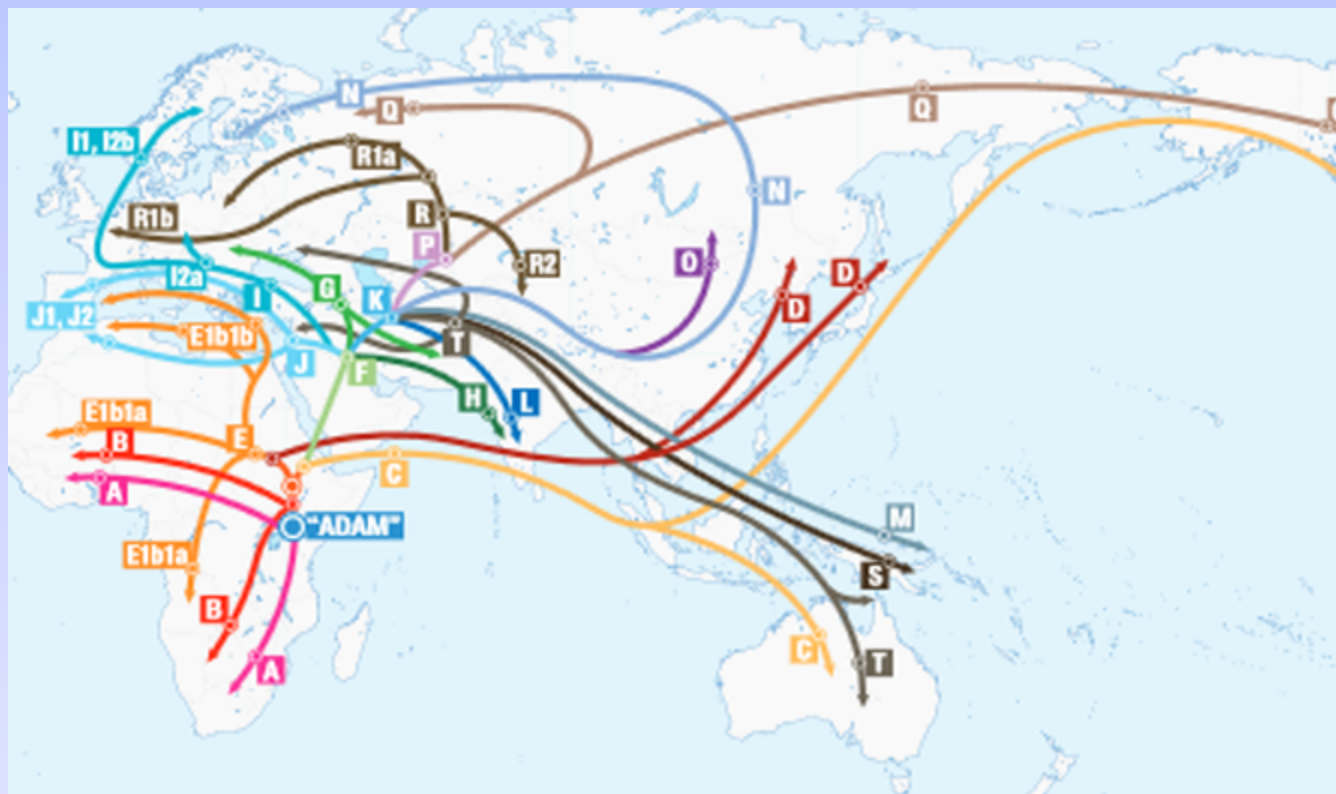




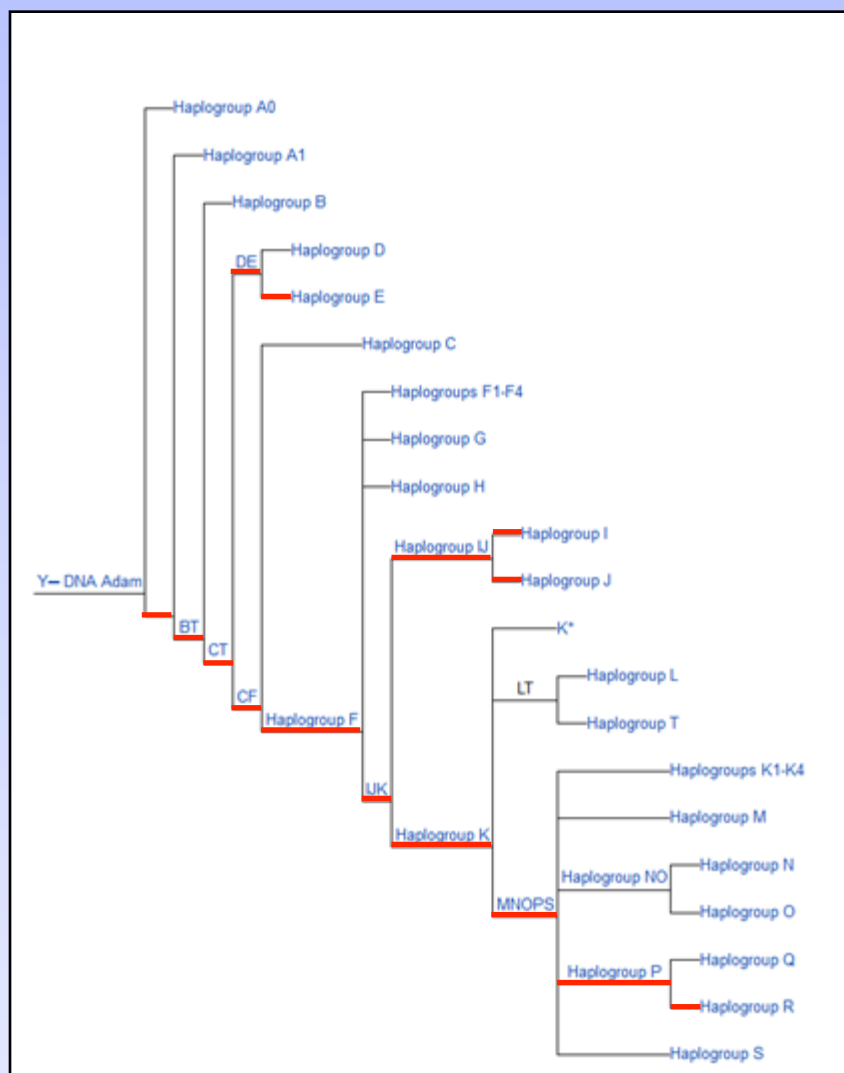




## Y-DNA Haplogroup Migration



Source: [FamilyTreeDNA.com](http://FamilyTreeDNA.com)





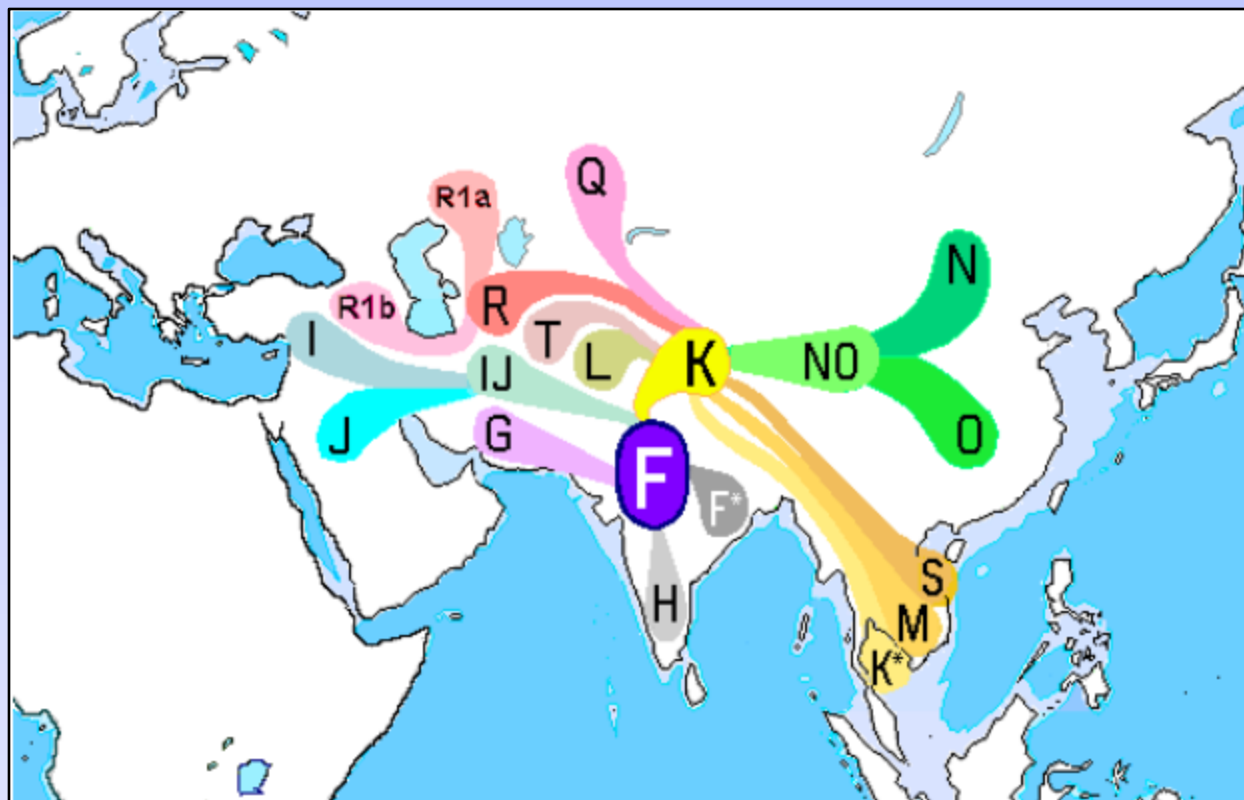
### Chronological development of haplogroups in Europe

Haplogroup	Possible time of origin (years ago)	Possible place of origin	Highest frequencies
K	40,000	South Asia or West Asia	
T	30,000	West Asia	
J	30,000	Middle East	
R	28,000	Central Asia	
E1b1b-M35	26,000	East Africa	
I	25,000	Balkans	
R1a1	21,000	Southern Russia	
R1b	20,000	Around the Caspian Sea or Central Asia	
E1b1b-M78	18,000	Egypt/Libya	
G	17,000	Between India and the Caucasus	
I2	17,000	Balkans	
J2	15,000	Northern Mesopotamia	
I2b	13,000	Central Europe	
N1c1	12,000	Siberia	
I2a	11,000	Balkans	
R1b1b2	10,000	North or south of the Caucasus	
J1	10,000	Arabian peninsula	
E1b1b-V13	10,000	Balkans	Albania
I2b1	9,000	Central Europe	Germany
I2a1	8,000	Pyrenees <sup>[16]</sup>	
I2a2	7,500	Dinaric Alps	
E1b1b-M81	5,500	Maghreb	Berbers
I1	5,000	Scandinavia	
R1b-L21	4,000	Central or Eastern Europe	
R1b-S28	3,500	around the Alps	
R1b-S21	3,000	Frisia or Central Europe	
I2b1a	< 3,000	Britain	

Source: [http://en.wikipedia.org/wiki/Human\\_Y-chromosome\\_DNA\\_haplogroup](http://en.wikipedia.org/wiki/Human_Y-chromosome_DNA_haplogroup)



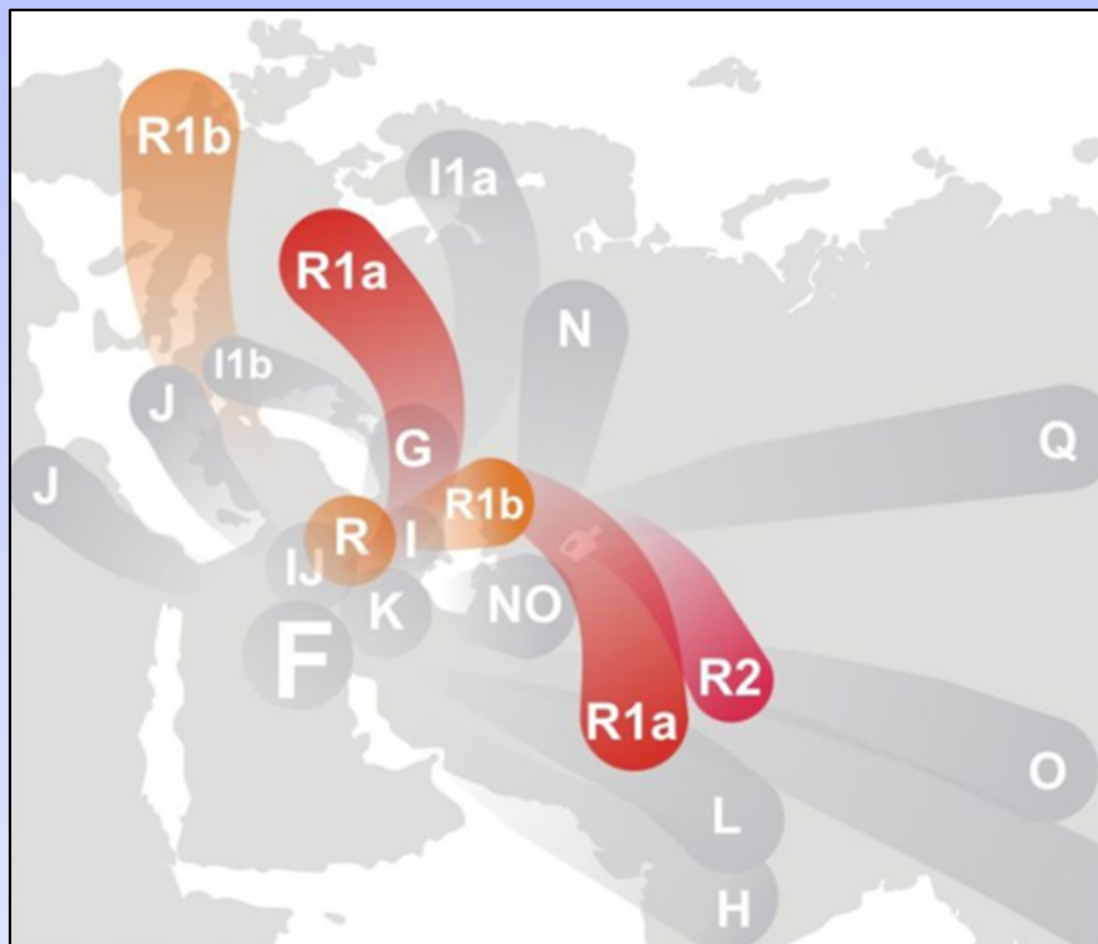
## The Spread of Haplogroup F



Source: *Wikimedia Commons* ([http://en.wikipedia.org/wiki/File:Haplogroup\\_F\\_%28Y-DNA%29.PNG](http://en.wikipedia.org/wiki/File:Haplogroup_F_%28Y-DNA%29.PNG))



## Haplogroup R's Dispersion



Source: *Wikimedia Commons* ([http://en.wikipedia.org/wiki/File:Haplogroup\\_R\\_%28Y-DNA%29.jpg](http://en.wikipedia.org/wiki/File:Haplogroup_R_%28Y-DNA%29.jpg))